

Hickam AFB Off Grid Solar VES

ONION EQUIPMENT



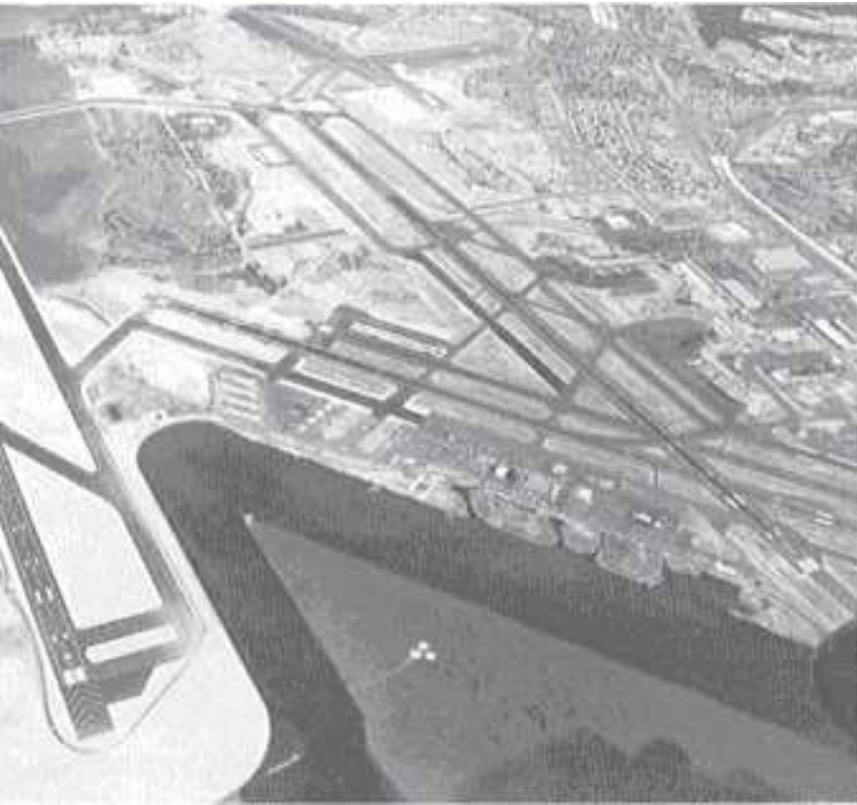


OAHU

HAWAII ISLANDS



PEARL HARBOR



CKAM afb

Headquarters Bullet Hole





LEGEND

- | | | | |
|--|---------------------------------|-------------------------------------|---------------------------|
| LOCATION OF SOL VAPOR MONITORING POINT | EQUIPMENT COMPOUND FENCELINE | PROPOSED SOL VAPOR MONITORING POINT | WATER LINE UTILITY |
| LOCATION OF MONITORED WELL (NO. 12) | DRILLING AT/NEAR EQUIPMENT AREA | PROPOSED SOL VAPOR MONITORING POINT | WASTEWATER LINE UTILITY |
| LOCATION OF SUB-AQUA DIFFERENTIAL PRESSURE MONITORING WELL (BUILDING NUMBER) | FURROWS | PROPOSED SOL VAPOR MONITORING POINT | STORAGE TANK LINE UTILITY |
| HORIZONTAL WELL CASING | ROAD OR DRIVEWAY | PROPOSED SOL VAPOR MONITORING POINT | NATURAL GAS LINE UTILITY |
| HORIZONTAL WELL SLOTTED PIPE | HOUSES | PROPOSED SOL VAPOR MONITORING POINT | FUEL LINE UTILITY |
| HORIZONTAL WELL BARREY ACCESS | FOR EQUIPMENT ENCLOSURE | PROPOSED SOL VAPOR MONITORING POINT | ELECTRIC LINE UTILITY |
| | SOLAR PANELS | PROPOSED SOL VAPOR MONITORING POINT | |
| | SOL VAPOR CONVEYANCE LINE | PROPOSED SOL VAPOR MONITORING POINT | |

NOTE:
 All system environmental well locations are preliminary and subject to change.
 SVE = Sub-aquic Vapor Event
 (DOH = State of Texas Department of Health)
 SVE = Sol Vapor Event
 TSP = Toxicity Study Implementation Plan

Preliminary SVE System Location

TSP to include SVEs on-site storage and flow from storage tanks, tanks, tanks





72 PANEL ARRAY



ARRAY DISCONNECTS

DEC Build Building





OEC BUILDING 12' X 36'



VAPOR EXTRACTION SIDE CLASS 1 DIV 2

10 HP PD BLOWER, 65 DBA, MOISTURE SEPARATOR, AND CARBON TREATMENT

Solar System Controls



PHASE CONVERTOR



Battery Controller



INVERTOR CONTROLLER



PROGRAMMER



Control Panel



HMI Touch Screen with Smart phone Operations

SOIL/VAPOR EXTRACTION (SVE) SCREEN

SVE MANIFOLD VACUUM (inHg)

0.0

SVE RELATIVE HUMIDITY (%)

0.0

SVE BLOWER VFD OUTPUT AMPS

0.0

SVE AIR FLOW METER (SCFM)

0.0

AWS FLOAT STATUS

- HIGH/HIGH
- PUMP START
- PUMP STOP

ALARM FLOATS

- COND. DRUM HIGH/HIGH

TOGGLE DAY SELECT / CONTROL

OPEN BIOSPARGE SCREEN

ALARM RESET



SVE VACUUM BLOWER RUNNING



- VFD FAULT
- SVE INLINE FILTER HIGH VACUUM

SVE BLOWER VFD TARGET SPEED (%)

0

SVE BLOWER HOUR METER

0.0

SVE VACUUM BLOWER



AWS TRANSFER PUMP RUNNING



- TRANSFER PUMP MOTOR OVERLOAD

TRANSFER PUMP HOUR METER

0.0

TRANSFER CYCLE COUNTER

0

AWS TRANSFER PUMP



SVE WELL #1 OPEN



SVE WELL #1



HOUR METER

0.0

SVE WELL #2 OPEN



SVE WELL #2



HOUR METER

0.0

SVE WELL #3 OPEN



SVE WELL #3



HOUR METER

0.0

SVE WELL #4 OPEN



SVE WELL #4



HOUR METER

0.0

SVE WELL #5 OPEN



SVE WELL #5



HOUR METER

0.0