



*The Trusted Integrator for Sustainable Solutions*

# Ramp Up Your Sustainability Program

## NOW!



Environmental  
Solutions



Sustainable  
Solutions



Property  
Redevelopment



Energy  
Solutions



Design/Build  
Construction

WESTON SOLUTIONS, INC.

## *Serving Shale Basin Development Nationwide*



[www.westonsolutions.com](http://www.westonsolutions.com)

- Shale Basins
- Shale Plays
- WESTON Office Locations

# What is Sustainability?

*“Meeting the needs of the present without compromising the ability of future generations to meet their own needs.”*

- Brundtland Commissions of the United Nation – 1987

“Ability of a business to conduct normal operations without experiencing limitations from: lack of natural resources (raw materials), negative public image (license to operate), or impacts to the environment (regulations).”

- Ryan Leatherbury – 2013

# What does Sustainability Mean?

- Investor/Board of Directors Level:
  - That future profits (growth) will not be impacted
- C-Suite Level:
  - That revenue (operations) will not be restricted/limited
- Practical Level:
  - That we will be able to get our jobs done

# Who Cares?

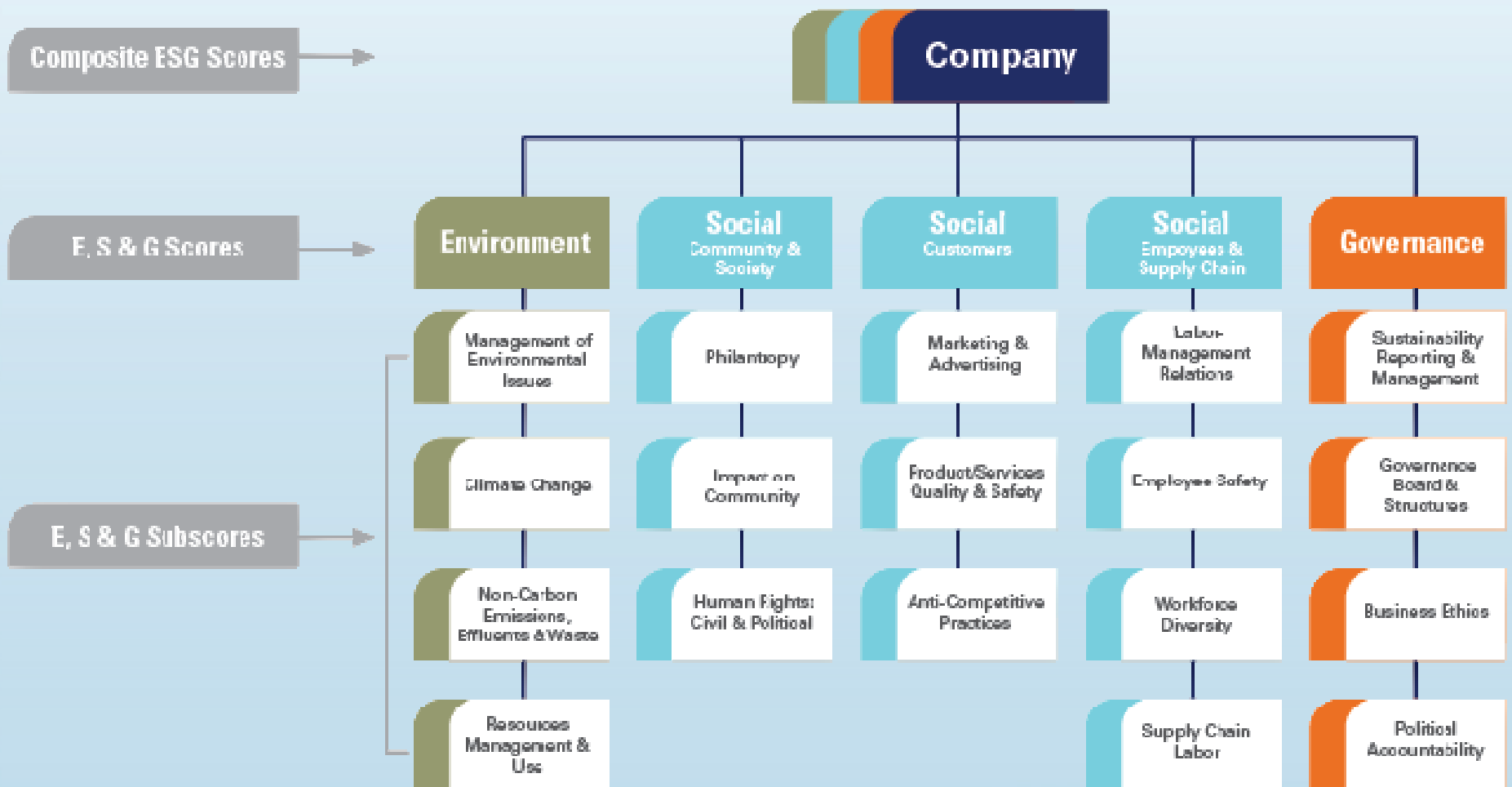
- Investors
- Insurers
- Lenders
- Board of Directors/C-Suite
- Regulators
- Local Residents

# And Why?

It's all about RISK

- Is the company/investment actively managing business risk?
- Is shareholder value going to be impacted by ESG?
  - Environment (E)
  - Social (S)
  - Governance (G)

# ESG Scores...



Source: MSCI ([www.msci.com](http://www.msci.com))

## But Why Now?

- Investors now compare investments using ESG indices (Bloomberg, Dow Jones, FTSE and others)
- Insurers can evaluate business risks through ESG
- It's not just production, profits and proven reserves any more...



# Reporting Mechanisms

- CDP (formerly Carbon Disclosure Project)
  - Water Disclosure Project underway
- Global Reporting Initiative (GRI)
- Securities and Exchange Commission (SEC) Filings
- EPA Greenhouse Gas Reporting Program
- Annual Reports/Sustainability Reports
- State/Local Authorities (water, environmental, etc.)

# Metrics and Drivers

- GHG Emissions
- Energy Use/Reliability
- Water Use/Supply Reliability and Quality
- Emissions – Air, Water, Waste
- Stakeholder Engagement
- Environmental Compliance (spills, upsets, etc.)
- Environmental Management

# You Have to PICK!

You can't manage them all – pick a few that could really impact your business performance

Ask yourself:

- What is the biggest impact to your operations (water, loss of production, PR)?
- What information can be gathered for a **reasonable cost**?
- Which risk do you have control over?
- What can I do to demonstrate performance improvement in those areas?

# Managing Your Sustainability Program

- Establish a plan (CDP, GRI, ... something)
- Metrics for each goal
- Drive metrics into operational performance...!
- Capture data where it is generated
- Establish a common reporting format across the enterprise
- Report regularly throughout the year so year-end isn't horrible

# Reporting

- Determine which reporting mechanism will meet your goal most effectively:
  - Annual Report
  - Web site
  - Separate sustainability performance report
- Is third-party verification worth the investment?
- Work with stakeholders to ensure they recognize transparency

# Improve as You Go

- Pro-active improvement is the most effective risk management mechanism
- Pay attention to trends in stakeholder demands
- Honestly evaluate what is working and what is not
- Engage as many employees as possible along the way

# References

- <https://www.cdproject.net/CDPResults/CDP-Global-Water-Report-2013.pdf>
- <https://www.globalreporting.org/Pages/default.aspx>
- [http://www.ftse.com/Indices/FTSE4Good\\_Index\\_Series/index.jsp](http://www.ftse.com/Indices/FTSE4Good_Index_Series/index.jsp)
- <http://www.csrwire.com/>
- <http://www.pwc.com/us/en/cfodirect/publications/point-of-view/integrated-reporting-pov.jhtml?display=/us/en/cfodirect/publications/point-of-view>
- [http://insight.kellogg.northwestern.edu/article/pinpointing\\_the\\_value\\_in\\_csr/](http://insight.kellogg.northwestern.edu/article/pinpointing_the_value_in_csr/)
- <http://www.sustainability-indices.com/>
- <http://www.ceres.org/press/press-clips/oil-firms-asked-to-account-for-climate-change-risk>



*The Trusted Integrator for Sustainable Solutions*



- **Contacts:**
- **Ryan Leatherbury – 210.248.2456**
- **Matt Goldman – 617.484.1837**
- **Missy Warner – 303.729.6135**